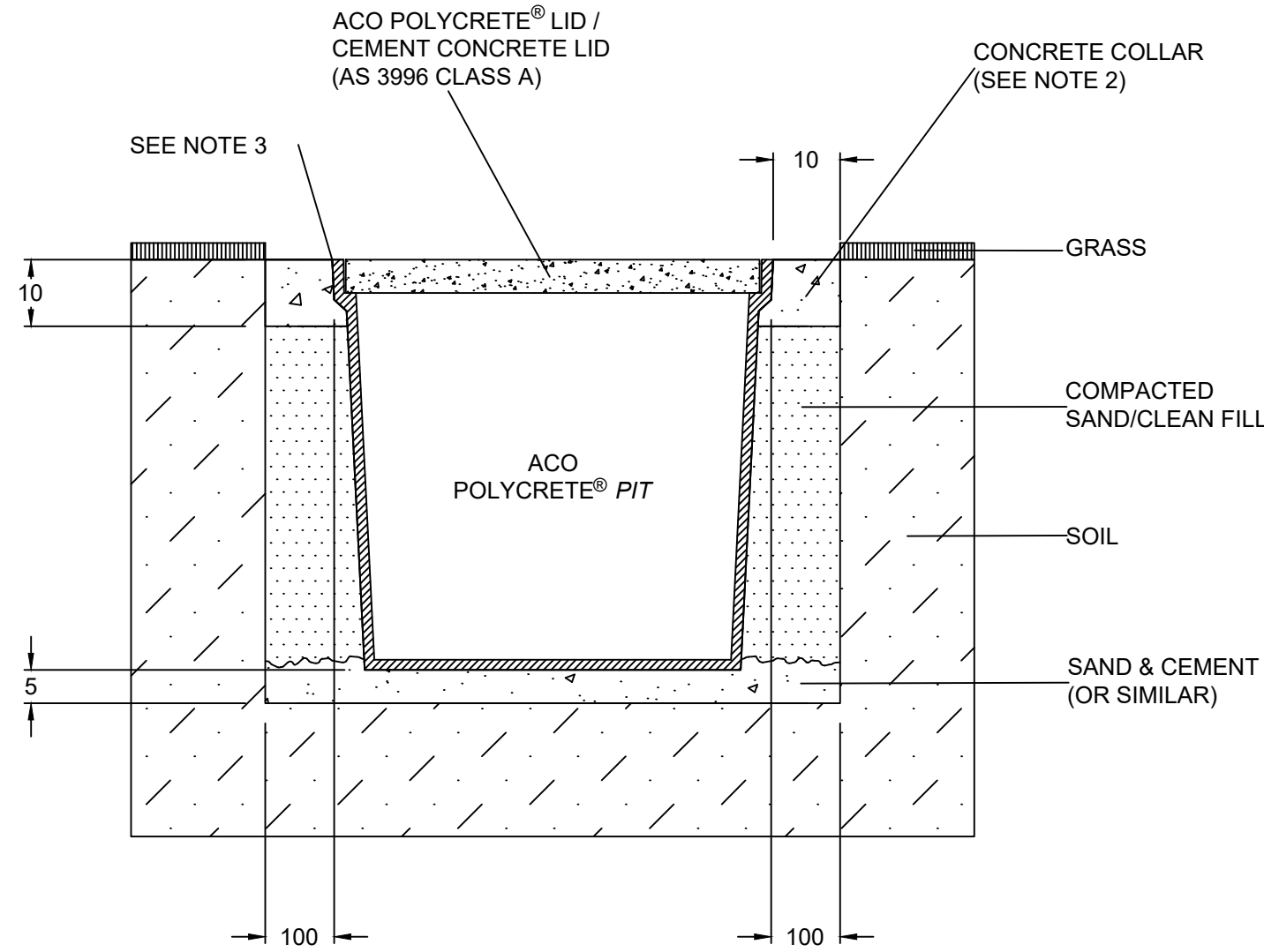
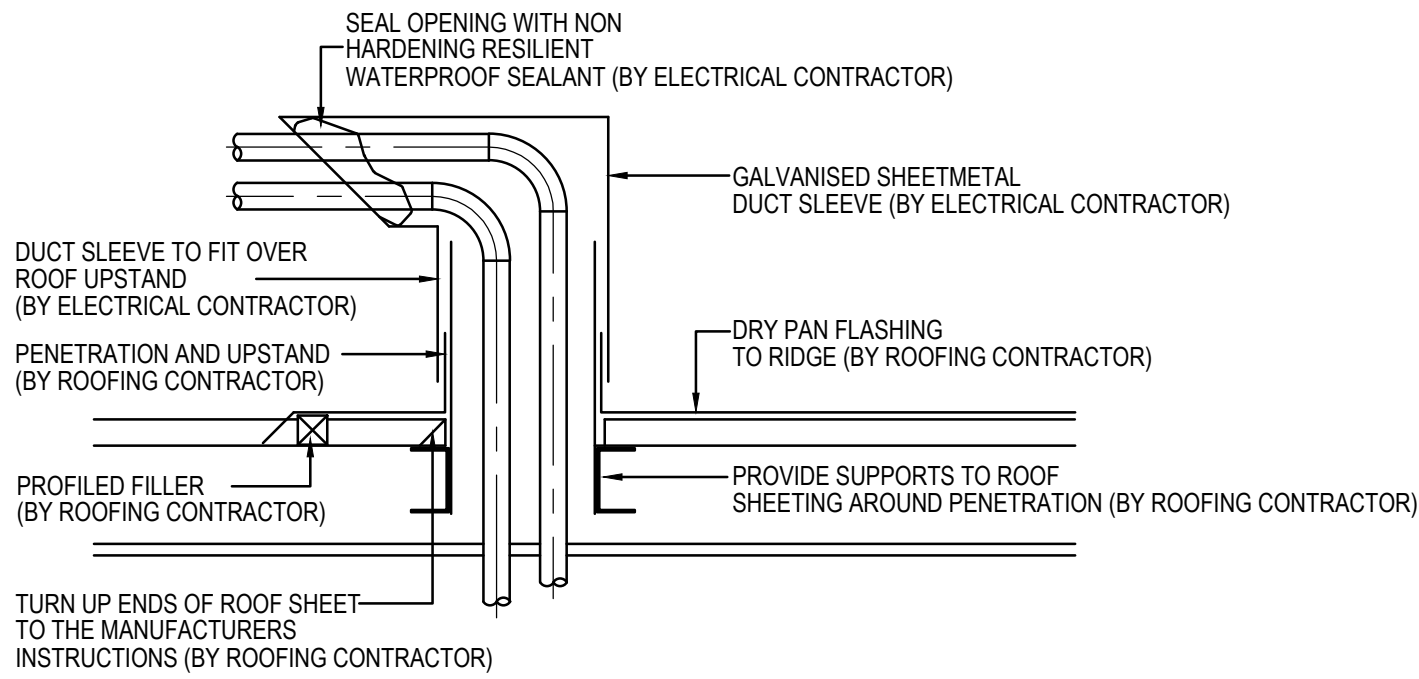


1 SHARED TRNECH DETAIL



- NOTES:
1. SPECIFIC SITE CONDITIONS MAY REQUIRE AN INCREASE IN THESE DIMENSIONS OR REINFORCEMENT. IT IS THE CUSTOMER'S RESPONSIBILITY TO ENSURE THE INSTALLATION DRAWING IS DETAILED FOR THE APPLICATION AND PIT STRUCTURE IS PROTECTED FROM UNDUE STRESS.
  2. CONCRETE SHOULD BE VIBRATED TO ELIMINATE AIR POCKETS.
  3. THE FINISHED LEVEL OF THE CONCRETE COLLAR MUST BE FLUSH WITH THE TOP OF THE PIT.
  4. REFER TO ACO'S LATEST INSTALLATION INSTRUCTIONS FOR COMPLETE DETAILS.

2 CABLE PIT DETAIL

- NOTES:
1. ALLOW TO COORDINATEWORKS WITH ROOFING CONTRACTOR

3 TYPICAL ROOF CABLE PENETRATION DETAIL

DRAWINGS TO BE READ IN CONJUNCTION WITH ELECTRICAL SPECIFICATION

A	21-11-18	TENDER ADDENDUM	PTK	
-	27-08-18	TENDER ADDENDUM	PTK	
Rev	Date	Issue Description	By	
Project				
PROPOSED COMMERCIAL DEVELOPMENT 97 KING WILLIAM STREET KENT TOWN				
Title				
ELECTRICAL SERVICES POWER DETAILS				
Architect				
ANTHONYDONATOARCHITECTS				
Suite 5/59 Fullarton Road   Kent Town SA 5087 t: 08 8364 6888   f: 08 8364 5355   www.adarchitects.com.au				
SECON				
consulting engineers				
456 PULTENEY STREET ADELAIDE SOUTH AUSTRALIA 5000				
TEL: 08 8223 7800 engineers@secon.net.au A.B.N. 30 613 300 299 A.C.N. 613 300 299				
© COPYRIGHT SECON PTY. LTD. 2017				
North	DRAWN	CLB	CHECKED	NC
	ENG	RB	Q.A.	AD
	DATE	MAR '18	SCALE	N/A
			SHEET	6 OF 10
DRAWING No.				
B8014-E06				
PLOT DATE: 21/11/2018			Size:	Rev.
			A1	A